



**MINISTRY OF BUSINESS,
INNOVATION & EMPLOYMENT**
HIKINA WHAKATUTUKI

New Zealand's Participation in the Square Kilometre Array Project

Dr Kjesten Wiig

Director, Multinational R&D Attraction Programme

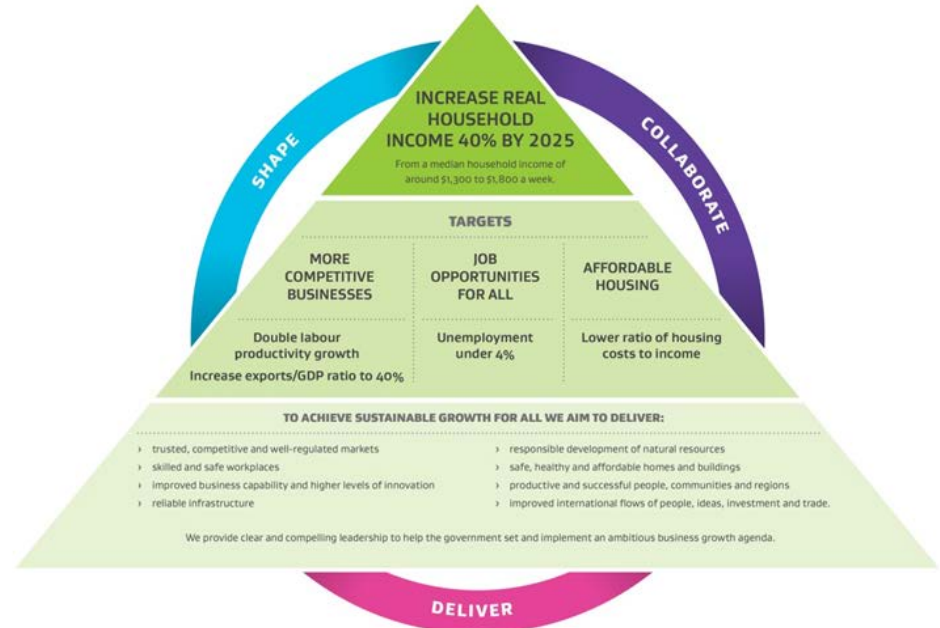


MBIE's Vision

Grow NZ for all

New Zealand by 2025...

We want New Zealand to have **more productive and competitive firms exporting knowledge-intensive goods**, low unemployment, more affordable housing and innovative cities.

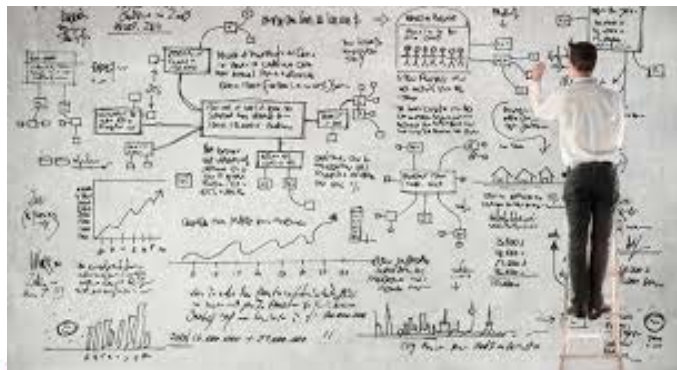


Skilled People and Innovative Firms are Key

Skilled people and innovative firms are the engines of economic growth. They offer the greatest scope for changes in interventions to *Grow New Zealand for All*.



Outside the
box **thinking**



How Do We Get More Innovative Firms?

- Funding science that could result in disruptive discoveries
- Enabling commercialisation of publicly funded research
- Helping more knowledge intensive firms to emerge from the ecosystem
- Helping firms to do more R&D



For Example....

ng it on ce

1

News (Business) Media Monday 9 July 2013

Funding NZ with science

The Government is pouring \$69 million into 41 of New Zealand's most promising research organisations. From developing bio-inspired road design to predicting super-stronger-by-tennis, the projects – if successful – will benefit a range of New Zealand businesses.

Teaia Parahi looks at four projects approved in the 2014 Ministry of Business, Innovation and Employment contestable science investment round.

1 **Whakaiohi Whakaiohi** is a research organisation that is focused on developing new materials and technologies for the construction industry. The organisation is currently working on developing a new type of concrete that is stronger and more durable than traditional concrete. This new concrete could be used in a wide range of applications, from building bridges to constructing roads. The project is funded by the Government and the organisation is currently in the early stages of development.

2 **Teaia Parahi** is a research organisation that is focused on developing new materials and technologies for the construction industry. The organisation is currently working on developing a new type of concrete that is stronger and more durable than traditional concrete. This new concrete could be used in a wide range of applications, from building bridges to constructing roads. The project is funded by the Government and the organisation is currently in the early stages of development.

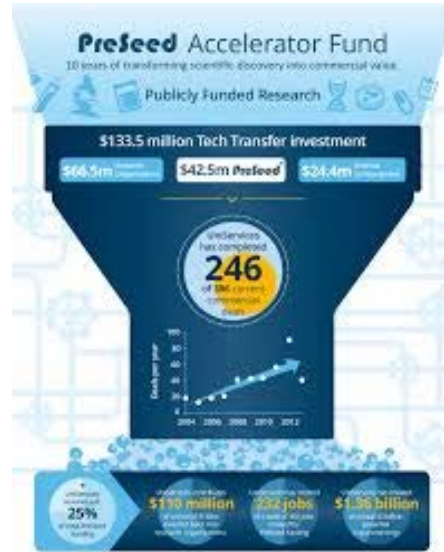
3 **Teaia Parahi** is a research organisation that is focused on developing new materials and technologies for the construction industry. The organisation is currently working on developing a new type of concrete that is stronger and more durable than traditional concrete. This new concrete could be used in a wide range of applications, from building bridges to constructing roads. The project is funded by the Government and the organisation is currently in the early stages of development.

4 **Teaia Parahi** is a research organisation that is focused on developing new materials and technologies for the construction industry. The organisation is currently working on developing a new type of concrete that is stronger and more durable than traditional concrete. This new concrete could be used in a wide range of applications, from building bridges to constructing roads. The project is funded by the Government and the organisation is currently in the early stages of development.

Minister: Phillip Smith's helper likely to have broken law when helping renew passport

Minister: Phillip Smith's helper likely to have broken law when helping renew passport

Minister: Phillip Smith's helper likely to have broken law when helping renew passport



Participation in BIG Science Projects

- CERN
- Synchrotron
- International Ocean Discovery Programme



Thinking Outside of the Box – SKA Project



- One of the most visionary and ambitious scientific projects of the 21st century
- Will be the largest scientific instrument on Earth, both in terms of the physical scale and in terms of the data it will generate



Current State of Play

- New NZ Representative on Board of Directors
- Participating in intergovernmental negotiations towards creating an Inter-Governmental Organisation
- Participating on sub-committees for IGO negotiations
- Currently conducting a cost-benefit analysis to inform future decision making
- Developing strategy for how SKA can add to/synergise with our science priorities





Future Investment Would Depend On...

- Continued priority for ground-breaking science for the SKA project
- Real potential for economic growth for New Zealand
- Providing additionality to other MBIE science investments



THANK YOU!!